

417

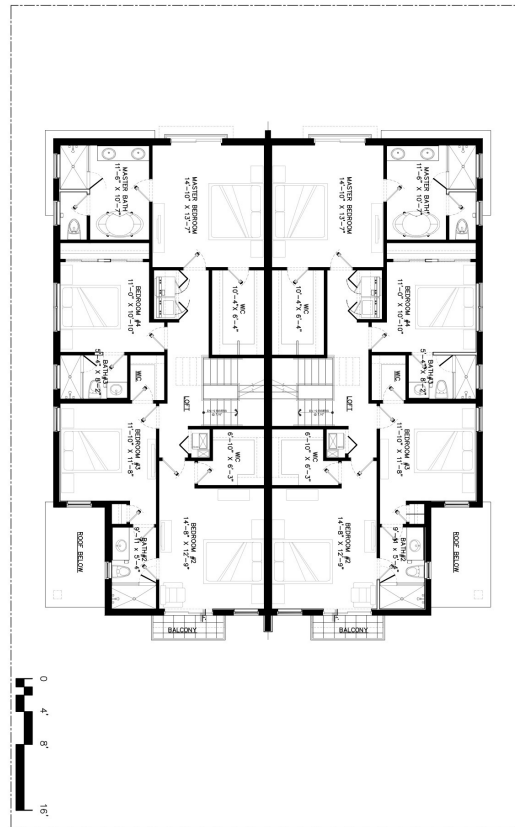
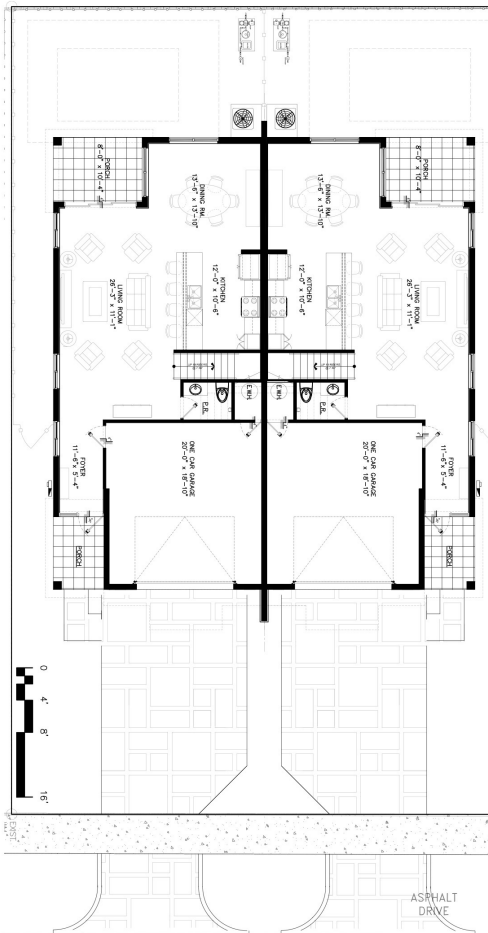
NORTHEAST 16

---

- F O R T L A U D E R D A L E -

419





# NORTHEAST 16

- FORT LAUDERDALE -



# 417 NORTHEAST 16

- FORT LAUDERDALE -

## BUILDING AREAS

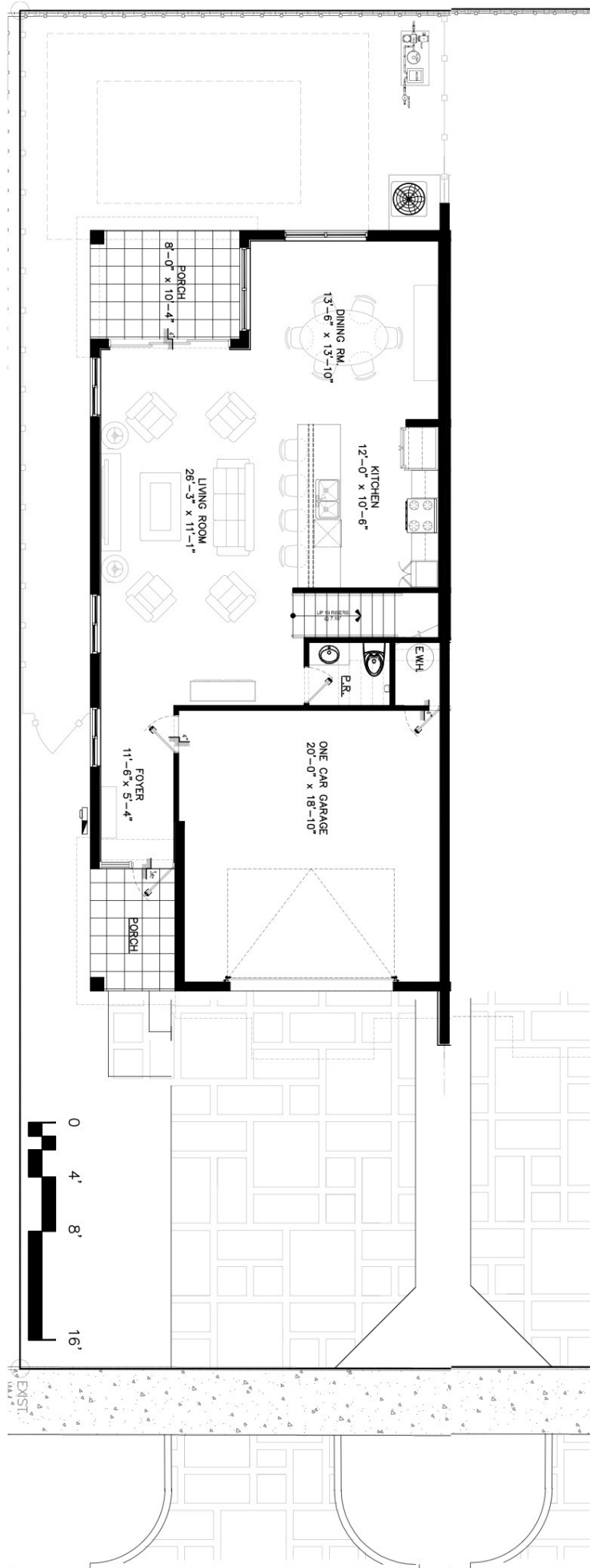
4 BEDROOM + 3 ½ BATHROOMS

FIRST LEVEL: 905 sf  
SECOND LEVEL: 1.430 sf

**TOTAL  
LIVING AREA: 2.335 sf**

GARAGE: 406 sf  
PATIO: 94 sf  
ENTRY: 60 sf  
BALCONY: 27 sf

**TOTAL  
AREA: 2.922 sf**



417

# NORTHEAST 16

- FORT LAUDERDALE -

## BUILDING AREAS

4 BEDROOM + 3 ½ BATHROOMS

FIRST LEVEL: 905 sf

SECOND LEVEL: 1.430 sf

## TOTAL

LIVING AREA: 2.335 sf

GARAGE: 406 sf

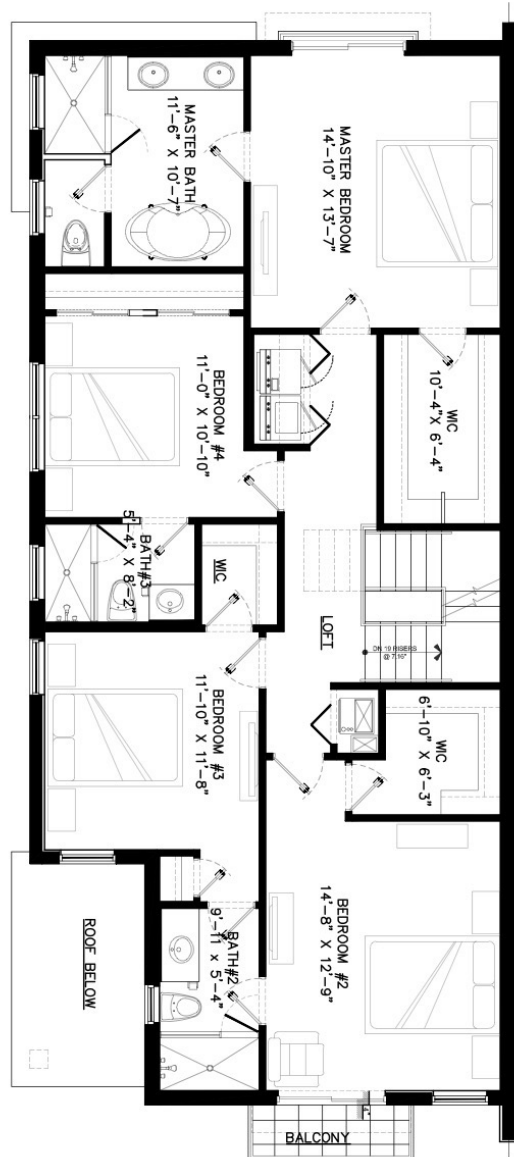
PATIO: 94 sf

ENTRY: 60 sf

BALCONY: 27 sf

## TOTAL

AREA: 2.922 sf





# 419 NORTHEAST 16

- FORT LAUDERDALE -

## BUILDING AREAS

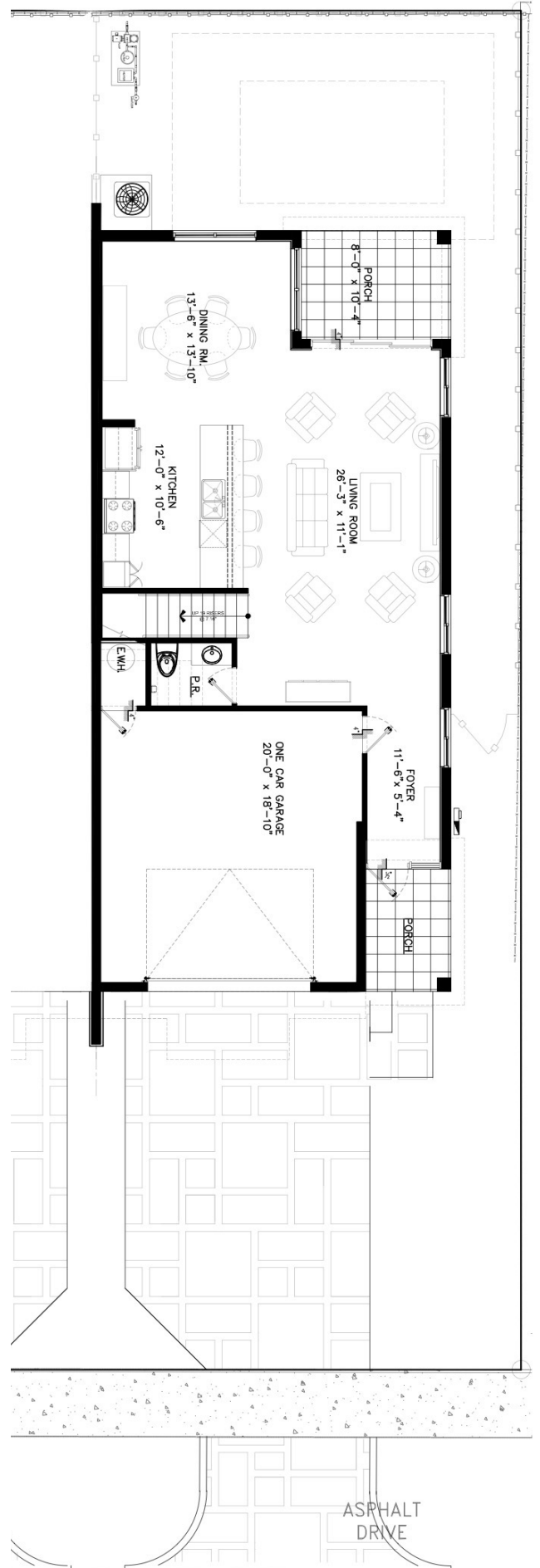
4 BEDROOM + 3 ½ BATHROOMS

FIRST LEVEL: 905 sf  
SECOND LEVEL: 1.430 sf

**TOTAL  
LIVING AREA: 2.335 sf**

GARAGE: 406 sf  
PATIO: 94 sf  
ENTRY: 60 sf  
BALCONY: 27 sf

**TOTAL  
AREA: 2.922 sf**





# 419 NORTHEAST 16

- FORT LAUDERDALE -

## BUILDING AREAS

4 BEDROOM + 3 1/2 BATHROOMS

FIRST LEVEL: 905 sf  
SECOND LEVEL: 1.430 sf

## TOTAL

LIVING AREA: 2.335 sf

GARAGE: 406 sf

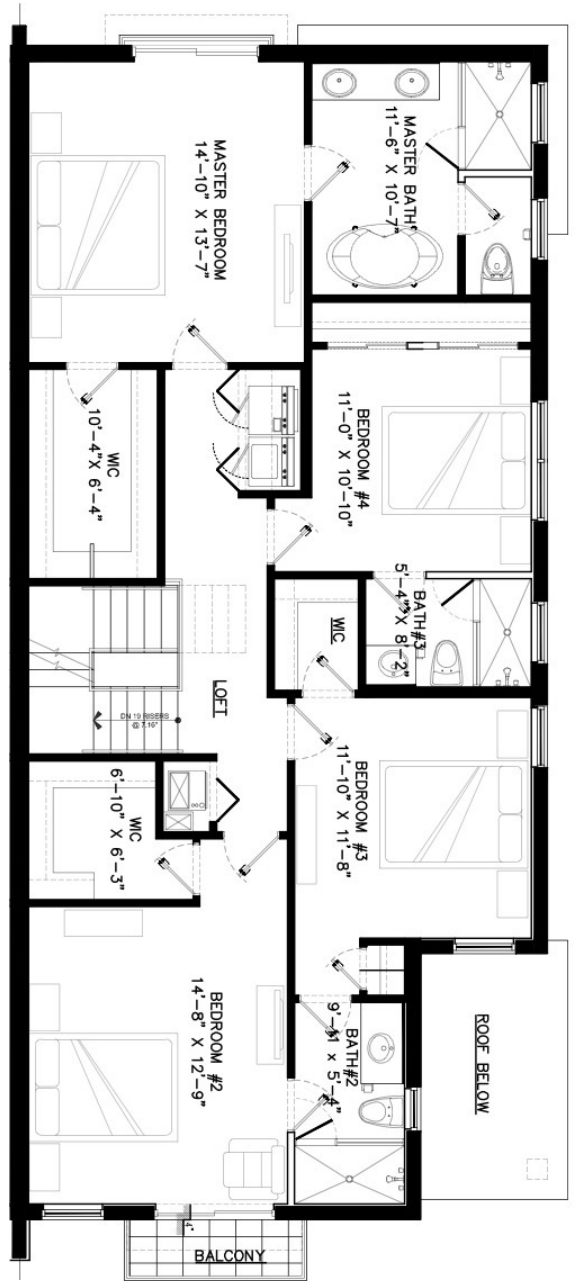
PATIO: 94 sf

ENTRY: 60 sf

BALCONY: 27 sf

## TOTAL

AREA: 2.922 sf





NORTHEAST 16

- F O R T L A U D E R D A L E -

**CONTACT US**



MIAMI BEACH  
REAL ESTATE GROUP  
(305) 546 - 3607

**PAMPA SUNBELT**