

# LA LINDA **MIAMI BEACH**

---

- T R O U V I L L E   E S P L A N A D E -









# MODERN - COMFORT

Miami Beach | Trouville  
Esplanade

A luxury five townhome complex in Miami Beach exclusive Normandy Isles.

Just minutes away from the beaches, major restaurants and the glamorous Bal Harbor Shops.

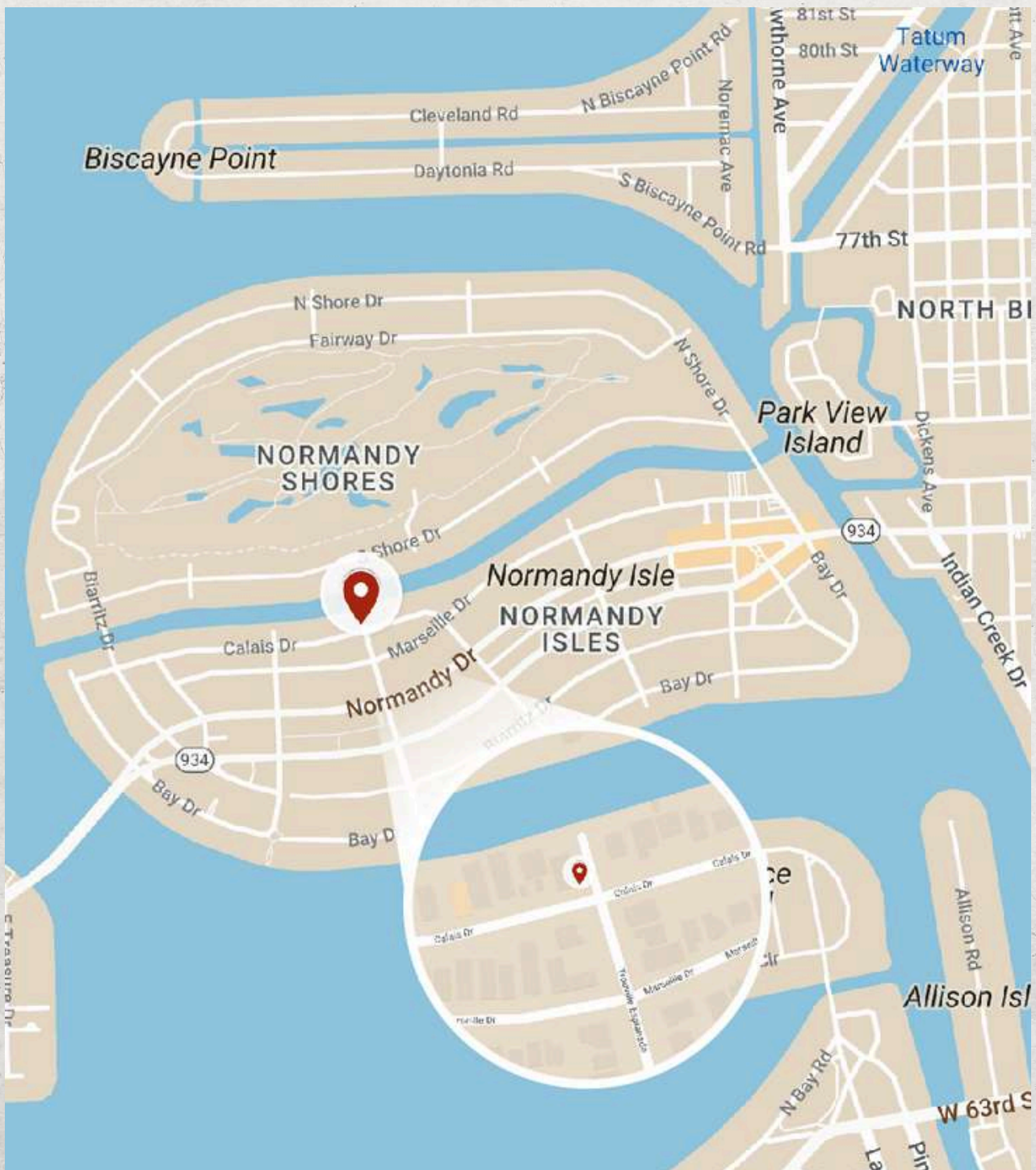
The most desirable place on earth to own a brand-new home with direct access to the inter-coastal.

Over 2,600 square feet under ac, four stories high with an elevator, two covered parking garages, 4 bedrooms and 3 bathrooms, SS appliances, washer & dryer, rooftop with plunge pool and barbecue area. Boat slip available



# LOCATION

7300 Trouville Esplanade,  
Normandy, Miami Beach, FL 33141



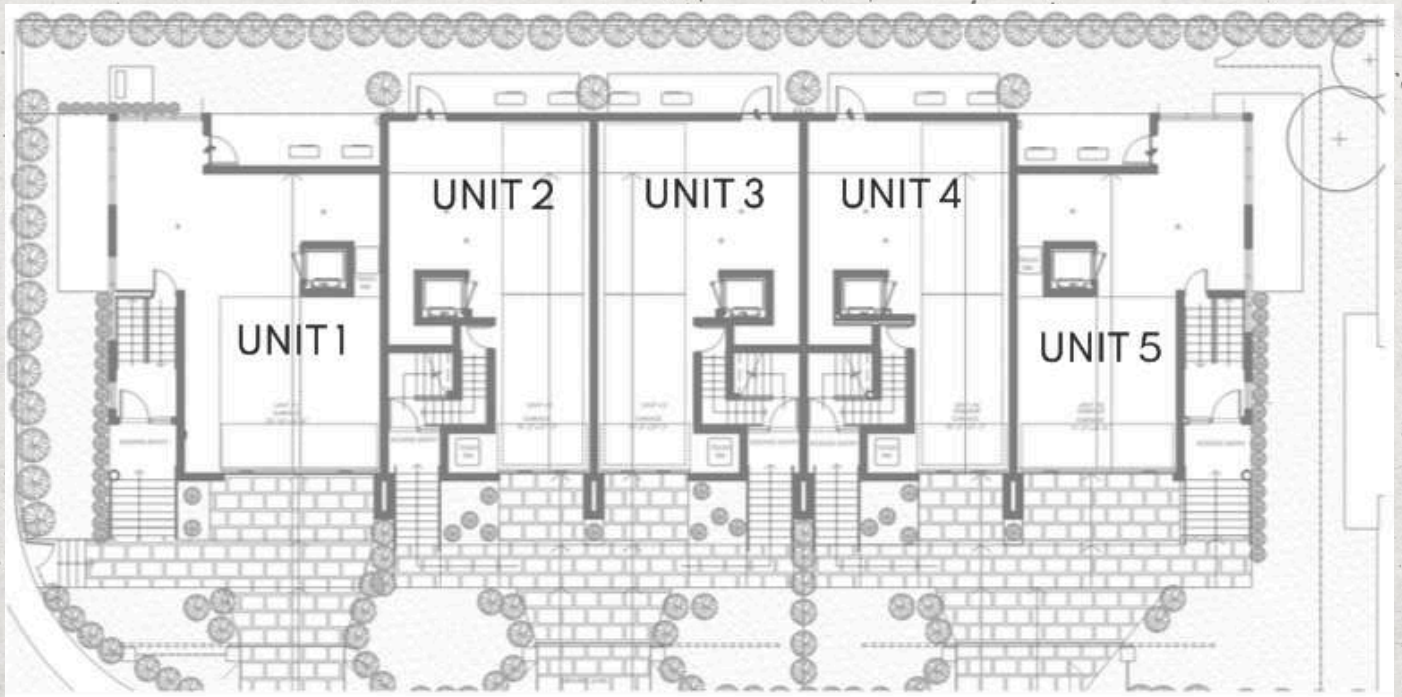






# MASTERPLAN

Miami Beach | Trouville Esplanade



**GROUND FLOOR LEVEL**

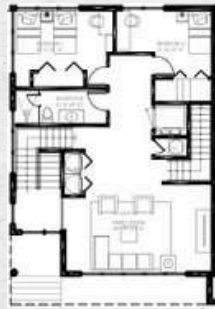
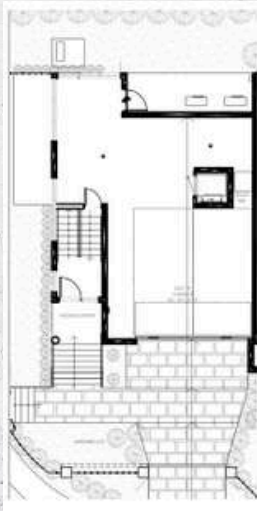






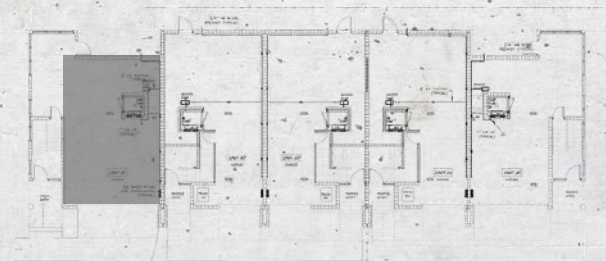
# UNIT 1

Miami Beach ITrouville  
Esplanade



- 4B / 3.5B
- Master bedroom
- Integrated kitchen
- Family room
- Laundry
- Pool deck
- Garage

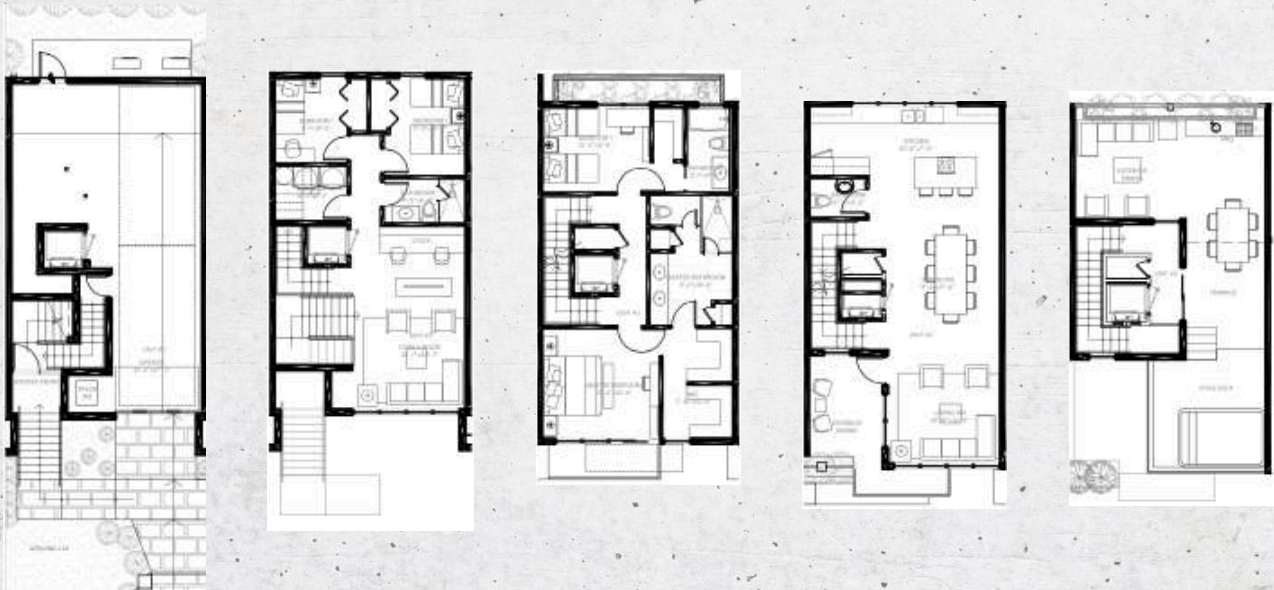
Under ac. area	2.815 sqft
Balc/Terr	1.648 sqft
Rooftop	503 sqft
Garage	800 sqft
Exterior Areas	1.741 sqft
<b>Total Areas</b>	<b>7.507 sqft</b>





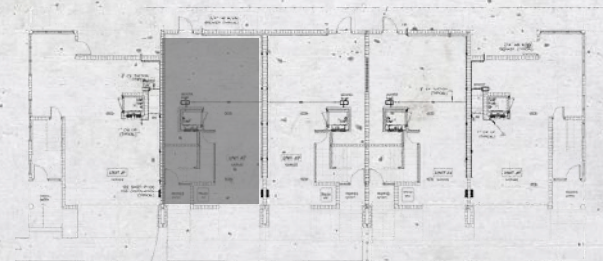
# UNIT 2

Miami Beach ITrouville  
Esplanade



- 4B / 3.5B
- Master bedroom
- Integrated kitchen
- Family room
- Laundry
- Pool deck
- Garage

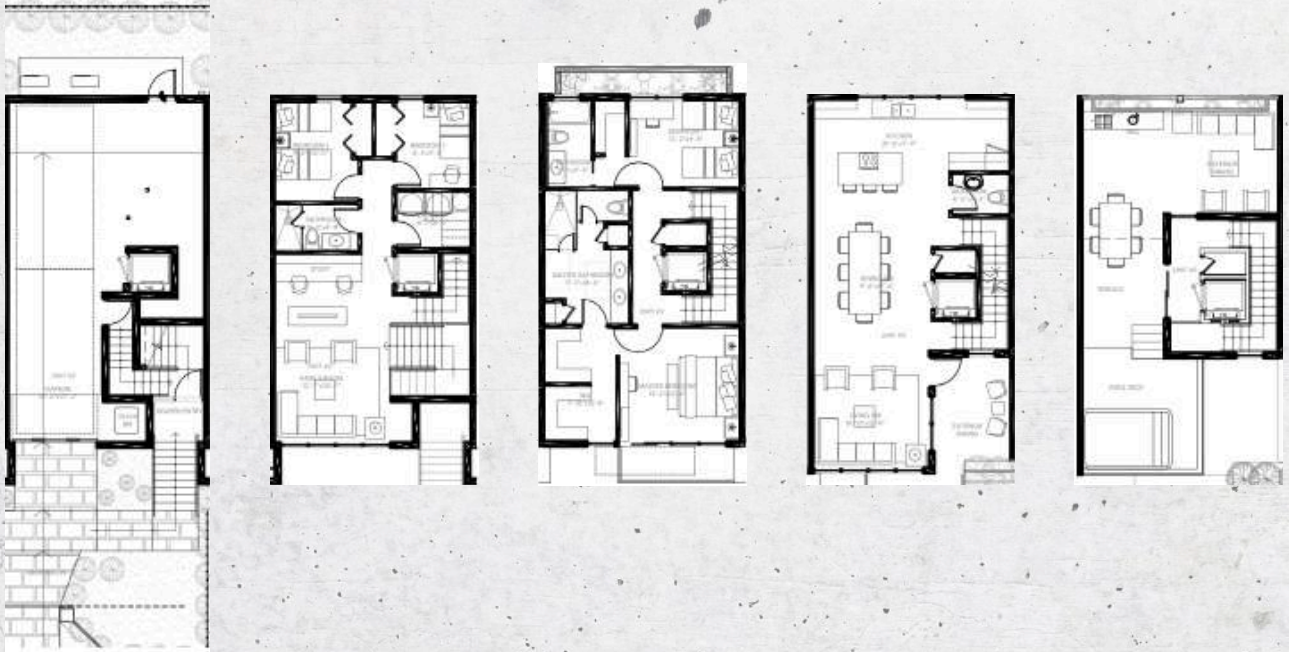
<b>Under ac. area</b>	<b>2.704 sqft</b>
Balc/Terr	989 sqft
Rooftop	611 sqft
Garage	663 sqft
Exterior Areas	819 sqft
<b>Total Areas</b>	<b>5.786 sqft</b>





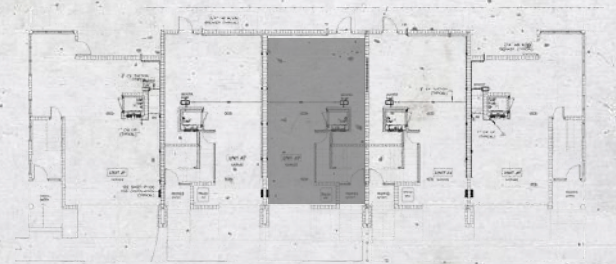
# UNIT 3

Miami Beach ITrouville  
Esplanade



- 4B / 3.5B
- Master bedroom
- Integrated kitchen
- Family room
- Laundry
- Pool deck
- Garage

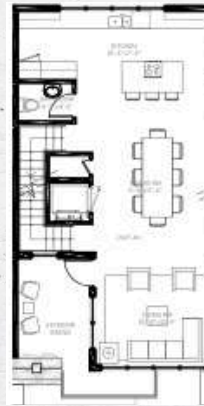
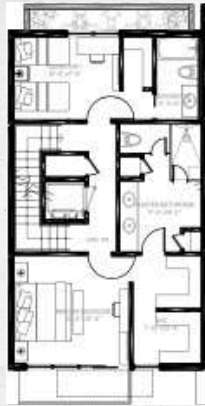
Under ac. area	2.704 sqft
Balc/Terr	989 sqft
Rooftop	611 sqft
Garage	663 sqft
Exterior Areas	819 sqft
<b>Total Areas</b>	<b>5.786 sqft</b>





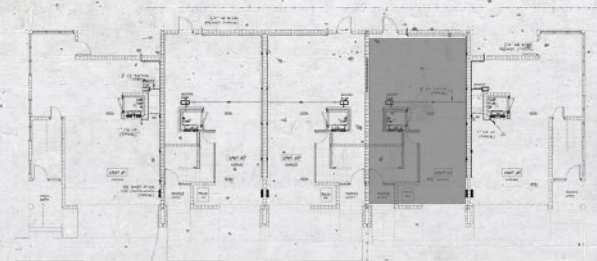
# UNIT 4

Miami Beach ITrouville  
Esplanade



- 4B / 3.5B
- Master bedroom
- Integrated kitchen
- Family room
- Laundry
- Pool deck
- Garage

<b>Under ac. area</b>	<b>2.704 sqft</b>
Balc/Terr	263 sqft
Rooftop	611 sqft
Garage	663 sqft
Exterior Areas	819 sqft
<b>Total Areas</b>	<b>5.061 sqft</b>





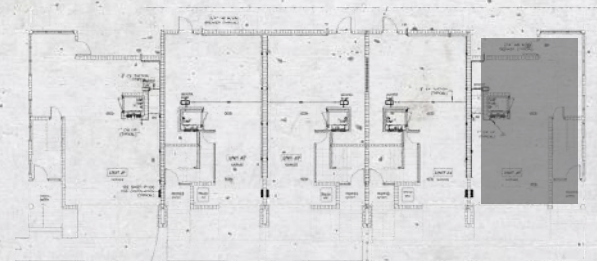
# UNIT 5

Miami Beach ITrouville  
Esplanade



- 4B / 3.5B
- Master bedroom
- Integrated kitchen
- Family room
- Laundry
- Pool deck
- Garage

Under ac. area	2.724 sqft
Balc/Terr	1.234 sqft
Rooftop	586 sqft
Garage	680 sqft
Exterior Areas	1.628 sqft
Total Areas	6.852 sqft















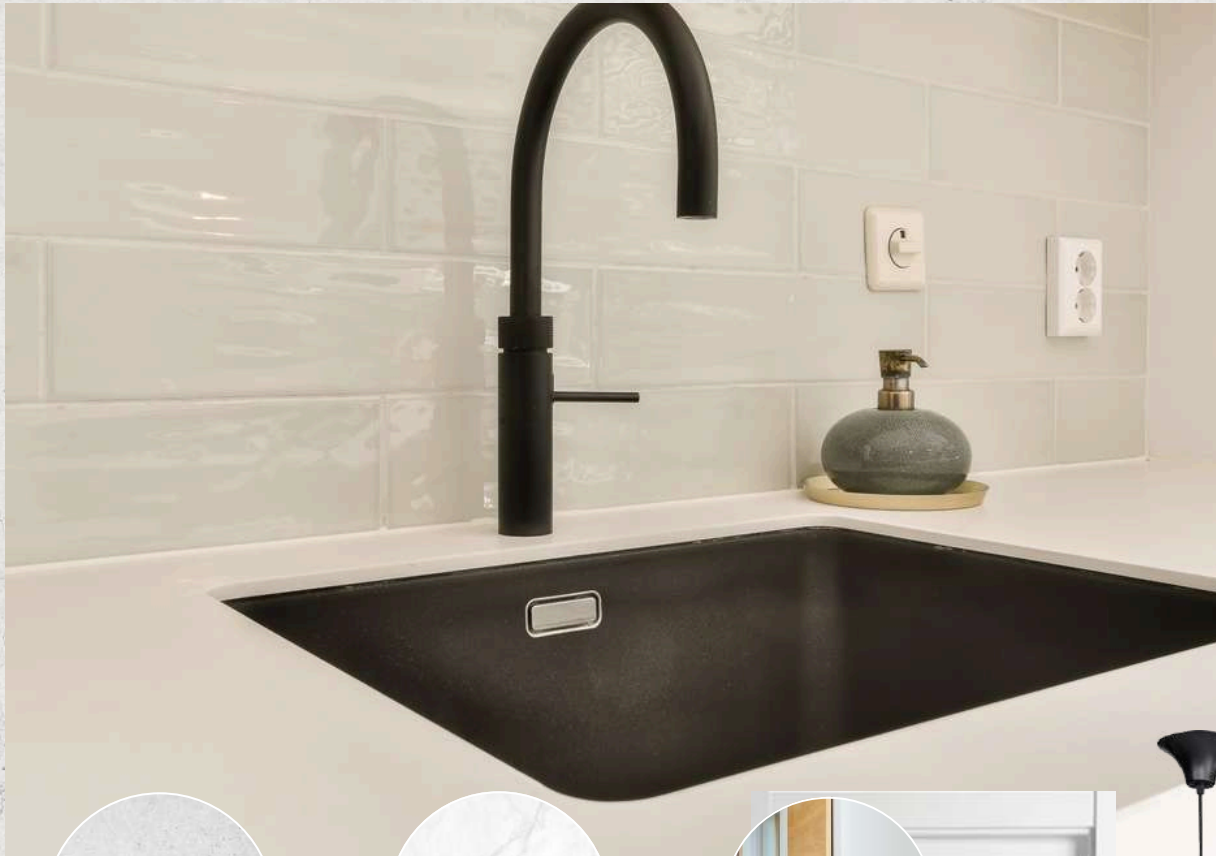
# PRIVATE MARINA

Miami Beach | Trouville Esplanade

An exclusive waterfront community designed for those who seek the ultimate in luxury and convenience. Enjoy direct access to your own private marina, perfect for boating enthusiasts. Dock your boat just steps from your front door.



INTERIOR DOORS / QUARTZ TOPS /  
BLACK FAUCETS / CABINETS / FLOORING



\*Illustrative only, and are provided to assist the purchaser in visualizing the units and the Project  
and may not be accurately depicted



HOWER TILES / BLACK FAUCETS /  
QUARTZ TOPS / DESIGN TUBS



\*Illustrative only, and are provided to assist the purchaser in visualizing the units and the Project and may not be accurately depicted



CONTACT US  
**Javier Martinez**  
**+1 (305) 546-3607**



MIAMI BEACH  
REAL ESTATE GROUP