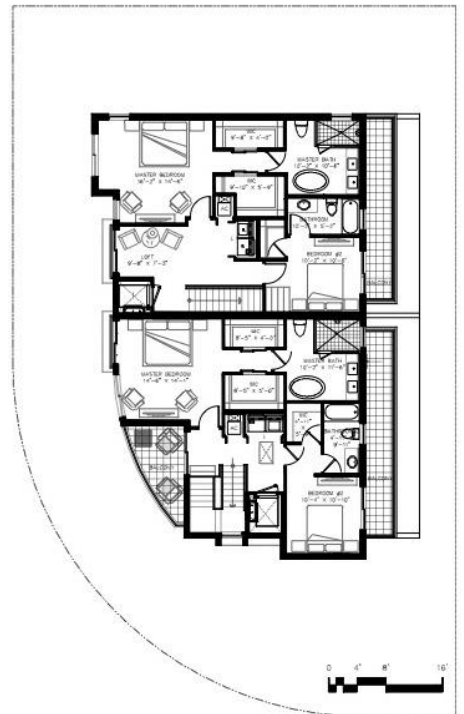
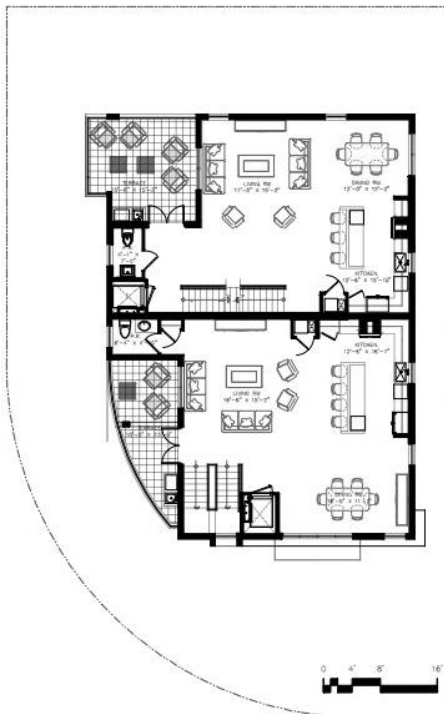
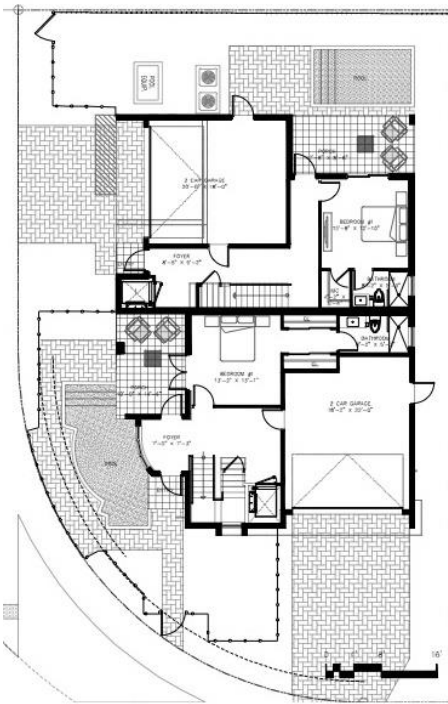


1507
NORHTEAST 4

- F O R T L A U D E R D A L E -



FOR REPRESENTATIVE PURPOSES ONLY AND SUBJECT TO VARIANCES, VARIANCES MAY INCLUDE, BUT ARE NOT LIMITED TO FINISHES FOR THE FINAL PRODUCT.

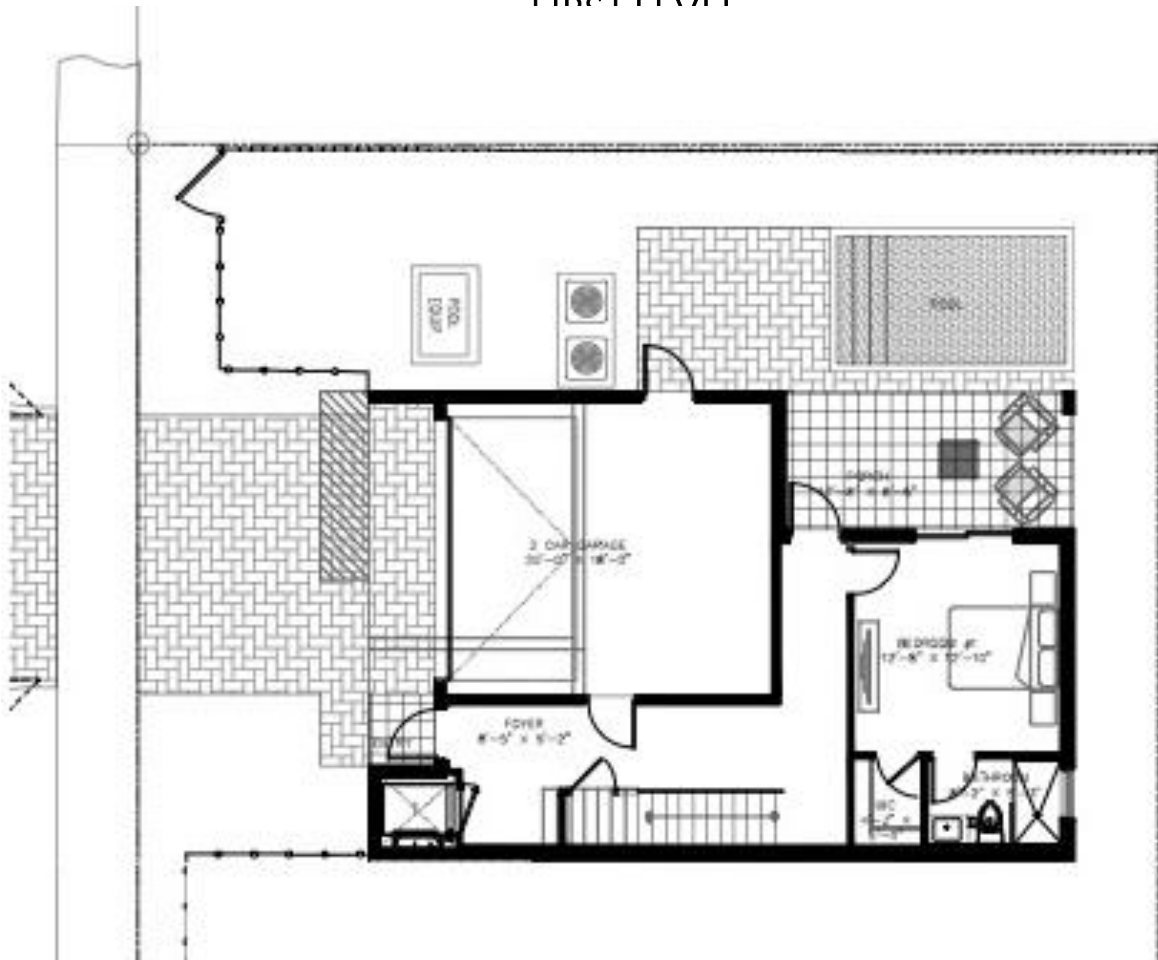


FOR REPRESENTATIVE PURPOSES ONLY AND SUBJECT TO VARIANCES, VARIANCES MAY INCLUDE, BUT ARE NOT LIMITED TO FINISHES FOR THE FINAL PRODUCT.



FOR REPRESENTATIVE PURPOSES ONLY AND SUBJECT TO VARIANCES, VARIANCES MAY INCLUDE, BUT ARE NOT LIMITED TO FINISHES FOR THE FINAL PRODUCT.

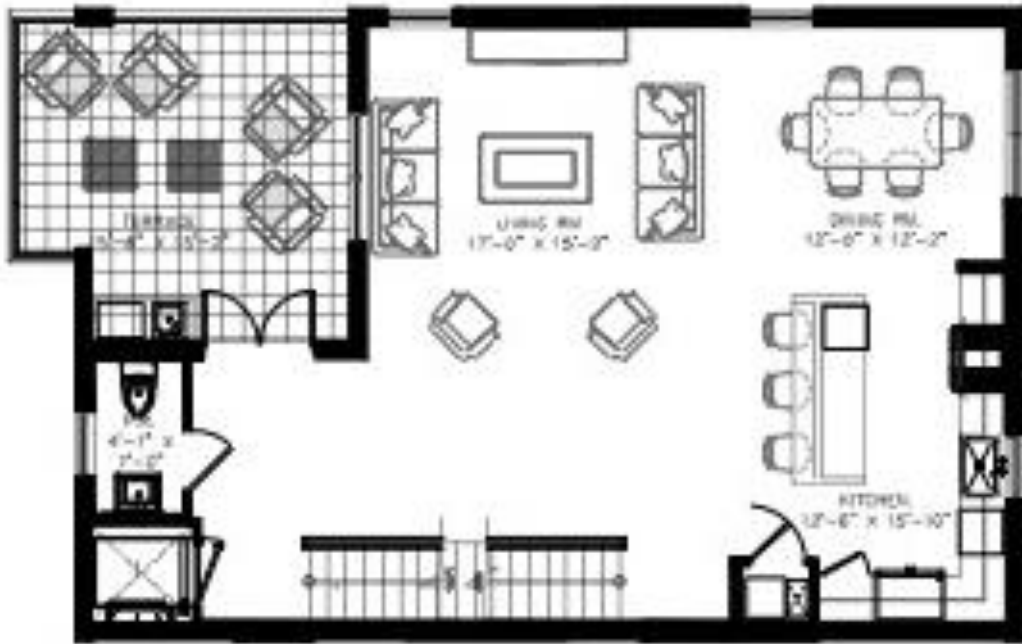
FIRST LEVEL



BUILDING AREAS
3 BEDROOM + 3 BATHROOMS

FIRST LEVEL:	580	GARAGE:	403 sf	
sf		PORCH:	424 sf	
SECO	ND LEVEL: 1.049 sf	ENTRY:		18 sf
ROOF TOP:	1.042 sf	BALCONY:	274 sf	
TOTAL LIVING AREA:	2.671 sf	TOTAL AREA:	3.516 sf	

SECOND LEVEL



BUILDING AREAS

3 BEDROOM + 3 BATHROOMS

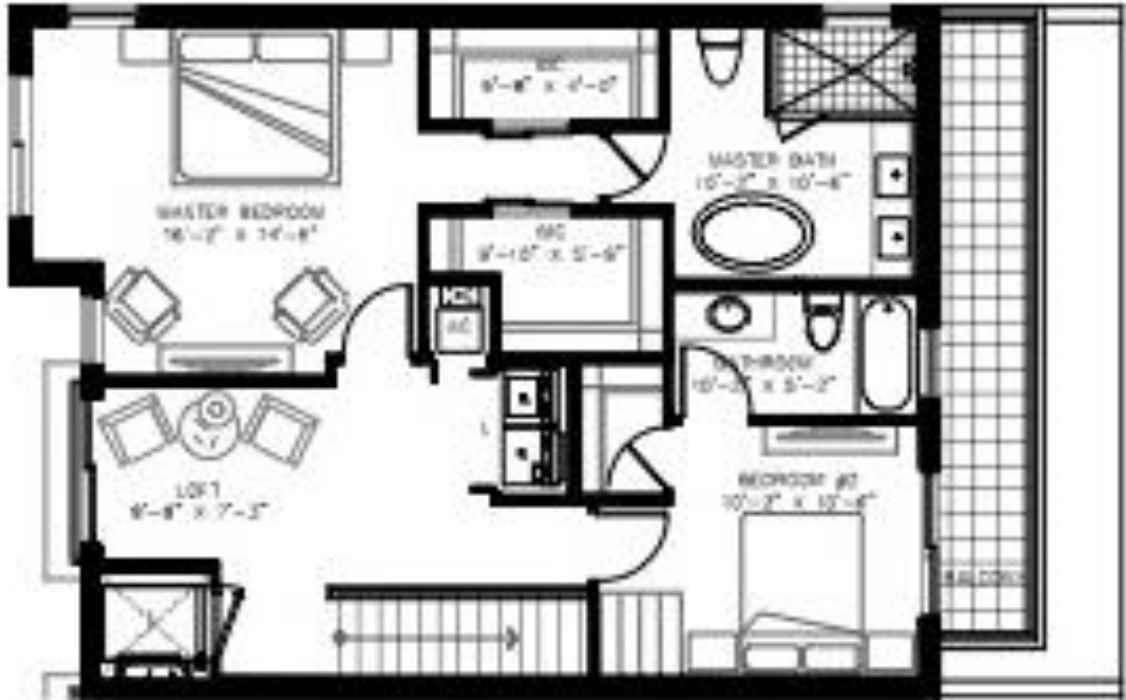
FIRST LEVEL:	580	GARAGE:	403 sf
sf		PORCH:	424 sf
SECOND LEVEL:	1,049 sf	ENTRY:	18 sf
ROOF TOP:	1,042 sf	BALCONY:	274 sf

TOTAL LIVING AREA:	2,671 sf	TOTAL AREA:	3,516 sf
--------------------	----------	-------------	----------

1507
NORHTEAST 4

- FORT LAUDERDALE -

THIRD LEVEL



BUILDING AREAS

3 BEDROOM + 3 BATHROOMS

FIRST LEVEL:	580	GARAGE:	403 sf
SECO		PORCH:	424 sf
ND LEVEL:	1.049 sf	ENTRY:	18 sf
ROOF TOP:	1.042 sf	BALCONY:	274 sf
TOTAL LIVING AREA:	2.671 sf	TOTAL AREA:	3.516 sf

1507
NORHTEAST 4

- FORT LAUDERDALE -



FOR REPRESENTATIVE PURPOSES ONLY AND SUBJECT TO VARIANCES, VARIANCES MAY INCLUDE, BUT ARE NOT LIMITED TO FINISHES FOR THE FINAL PRODUCT.

CONTACT US

Javier Martinez
+1 (305) 546-3607



MIAMI BEACH
REAL ESTATE GROUP

PAMPA SUNBELT

1507
NORHTEAST 4
- F O R T L A U D E R D A L E -